

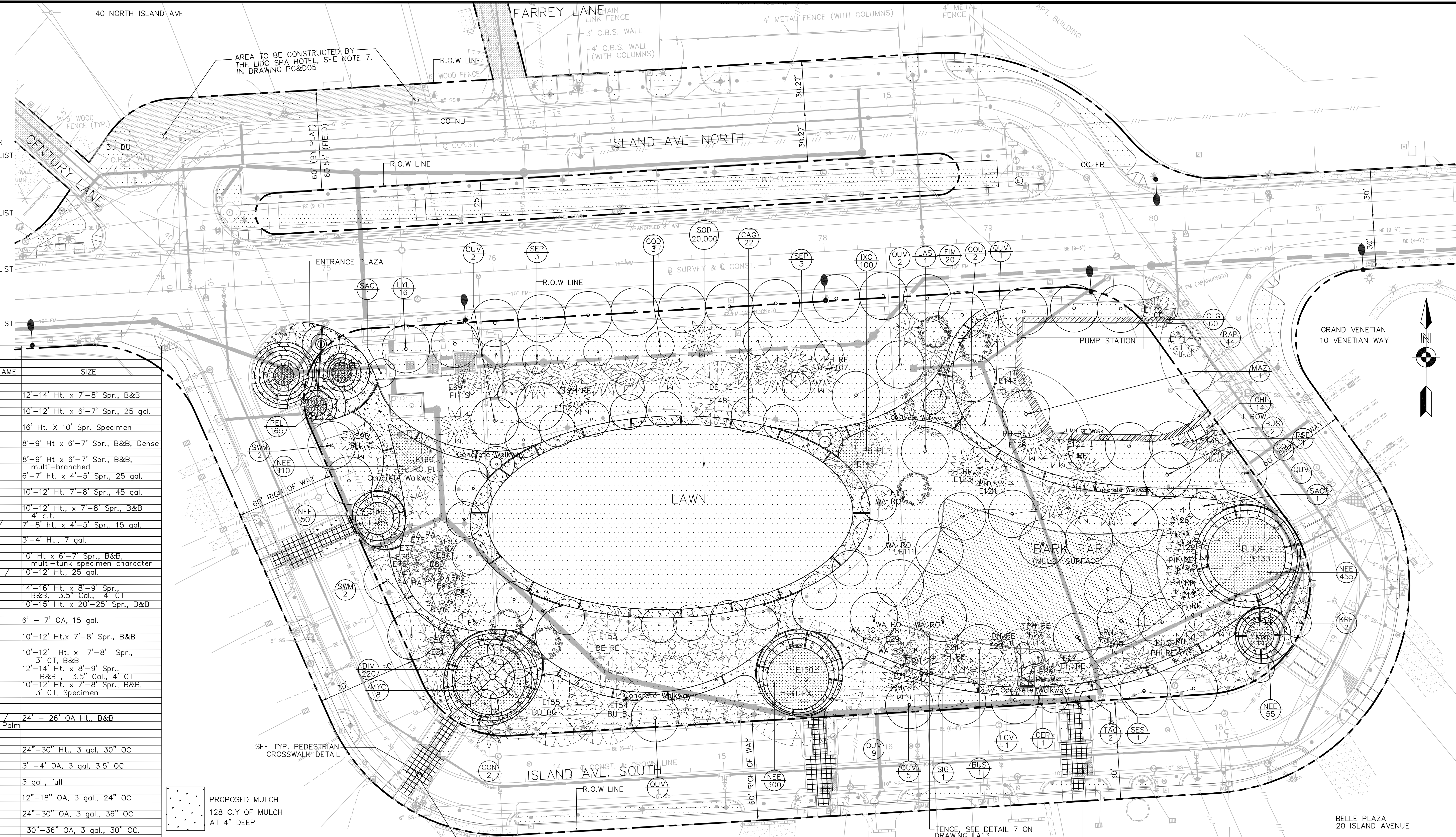
- LEGEND**
- EXISTING SIDE WALK AND DRIVEWAY
 - PROPOSED CONCRETE SIDEWALK
 - PROPOSED GROUNDCOVER SEE DRAWING & PLANT LIST IN SHEET LA11
 - PROPOSED SHRUB SEE DRAWING & PLANT LIST IN SHEET LA11
 - PROPOSED FLOWER BED. SEE DRAWING & PLANT LIST IN SHEET LA11
 - PROPOSED SOD SEE DRAWING & PLANT LIST IN SHEET LA11

BELLE ISLE PARK PLANT LIST

KEY	QTY.	BOTANICAL/COMMON NAME	SIZE
TREES			
BUS	3	Bursera simaruba / Gumbo Limbo	12'-14' Ht. x 7'-8" Spr., B&B
CAG	22	Caesalpinia grandillo / Bridal Veil	10'-12' Ht. x 6'-7" Spr., 25 gal.
CEP	1	Ceiba pentandra / Kapok tree	16' Ht. X 10' Spr. Specimen
COD	3	Coccoloba diversifolia / Pigeon Plum	8'-9' Ht x 6'-7" Spr., B&B, Dense
COU	3	Coccoloba uvifera / Seagrape	8'-9' Ht x 6'-7" Spr., B&B, multi-branched
KRF	2	Krugiodendron ferreum / Ironwood	6'-7' ht. x 4'-5" Spr., 25 gal.
LAS	1	Lagerstromia speciosa / Queen Grape Mertie	10'-12' Ht. 7'-8" Spr., 45 gal.
LYL	16	Lysitoma latifolia / Wild Tamarind	10'-12' Ht., x 7'-8" Spr., B&B 4' c.t.
LOV	1	Lonchocarpus violaceus / Purple Lonchocarpus	7'-8' ht. x 4'-5" Spr., 15 gal.
MAZ	1	Manikora zapota / Sapodilla	3'-4' Ht., 7 gal.
MYC	8	Myrica cerifera / Wax Myrtle	10' Ht x 6'-7" Spr., B&B, multi-tunk specimen character
PSE	1	Pseudobombax ellipticum / Shaving Brush Tree	10'-12' Ht., 25 gal.
QUV	21	Quercus virginiana / Live Oak	14'-16" Ht. x 8'-9" Spr., B&B, 3.5" Cal., 4' CT
SAC	2	Sabina cordinalis / Sabina	10'-15" Ht. x 20'-25" Spr., B&B
SEP	6	Senna polyphylla / Desert Senna	6' - 7' OA, 15 gal.
SES	1	Senna spectabilis / Giant Cassia	10'-12' Ht.x 7'-8" Spr., B&B
SIG	1	Simaruba glauca / Paradise Tree	10'-12' Ht. x 7'-8" Spr., 3' CT, B&B
SWM	4	Swietenia mahogani / Mahogany	12'-14" Ht. x 8'-9" Spr., B&B, 3.5" Cal., 4' CT
TAC	2	Tabebuia caraiba / Silver Trumpet Tree	10'-12' Ht. x 7'-8" Spr., B&B, 3' CT, Specimen
PALMS			
CON	2	Cocos nucifera 'Malayan' / Green Malayan Coconut Palm	24' - 26" OA Ht., B&B
SHRUBS			
CHI	14	Chrysobalanus icaco / Redtip cocoplum	24"-30" Ht., 3 gal, 30" OC
CLG	60	Clusia guttifera / Small Leaved Clusia	3' -4' OA, 3 gal, 3.5' OC
FIM	20	Ficus montana / Oakleaf Fig	3 gal., full
IXC	100	Ixora chinensis / Chinese Ixora	12"-18" OA, 3 gal., 24" OC
NEF	50	Nephrolepis falcata / Macho Fern	24"-30" OA, 3 gal., 36" OC
RAP	44	Rapanea punctata / Myrsine	30"-36" OA, 3 gal., 30" OC
GROUNDCOVERS			
DIV	220	Dietes vegeta / White African Iris	12"-18" OA, 1 gal., 24" OC
NEE	920	Nephrolepis exaltata / Boston Fern	6"-10" OA, 1 gal., 24" OC
PEL	165	Pentas lanceolata 'Dwarf' / Dwarf Lavender Pentas	12"-15" OA, 1 gal., 18" OC
SOD	106,800	Stenotaphrum secundatum / St. Augustine	palettes

- LEGEND**
- PROPOSED MULCH 128 C.Y. OF MULCH AT 4" DEEP
 - PROPOSED PLANT SYMBOL
 - TYPE OF PLANT
 - NUMBER OF PLANTS

NOTES
 PROPOSED PLANTS ARE SHOWN WITH IDENTIFICATION
 ALL OTHER PLANTS SHOWN ARE EXISTING
 OR TRANSPLANTED; REFER TO SHEET LA01 & LA02



NO.	DATE	REVISION
5		
4		
3		
2	01/11/06	AS-BID DOCUMENTS
1	11/18/05	100% SUBMITTAL COMPLETION STAGE

DESIGNER: B.M.
 DRAWN BY: O.S.
 CHECKER: B.M.
 SCALE: 1"=30'-0"

Edwards and Kelcey
 7300 N. Kendall Drive Suite 400
 Miami, Florida 33156
 Tel: 305.279.2298 Fax: 305.279.5812
 E: ekcorp.com

savinomiller
 DESIGN STUDIO
 LANDSCAPE ARCHITECTURE | PLANNING | DESIGN | CONSTRUCTION
 1700 CONVENTION CENTER DRIVE, MIAMI BEACH, FL 33139

CITY OF MIAMI BEACH, FLORIDA
 CAPITAL IMPROVEMENT PROJECTS OFFICE
 BARRY R. MILLER, L.A.
 No. 866

VENETIAN ISLANDS BID PACKAGE B
BELLE ISLE R/W AND PARK IMPROVEMENTS
 PLANTING PLAN-PARK

File location:
 D:\Acad\Projects\Venetian Islands-B Belle Isle\Package-B_Const_Docs
 Date: 01-11-06
 Sheet: 71 of 73 Drawing: LA11