

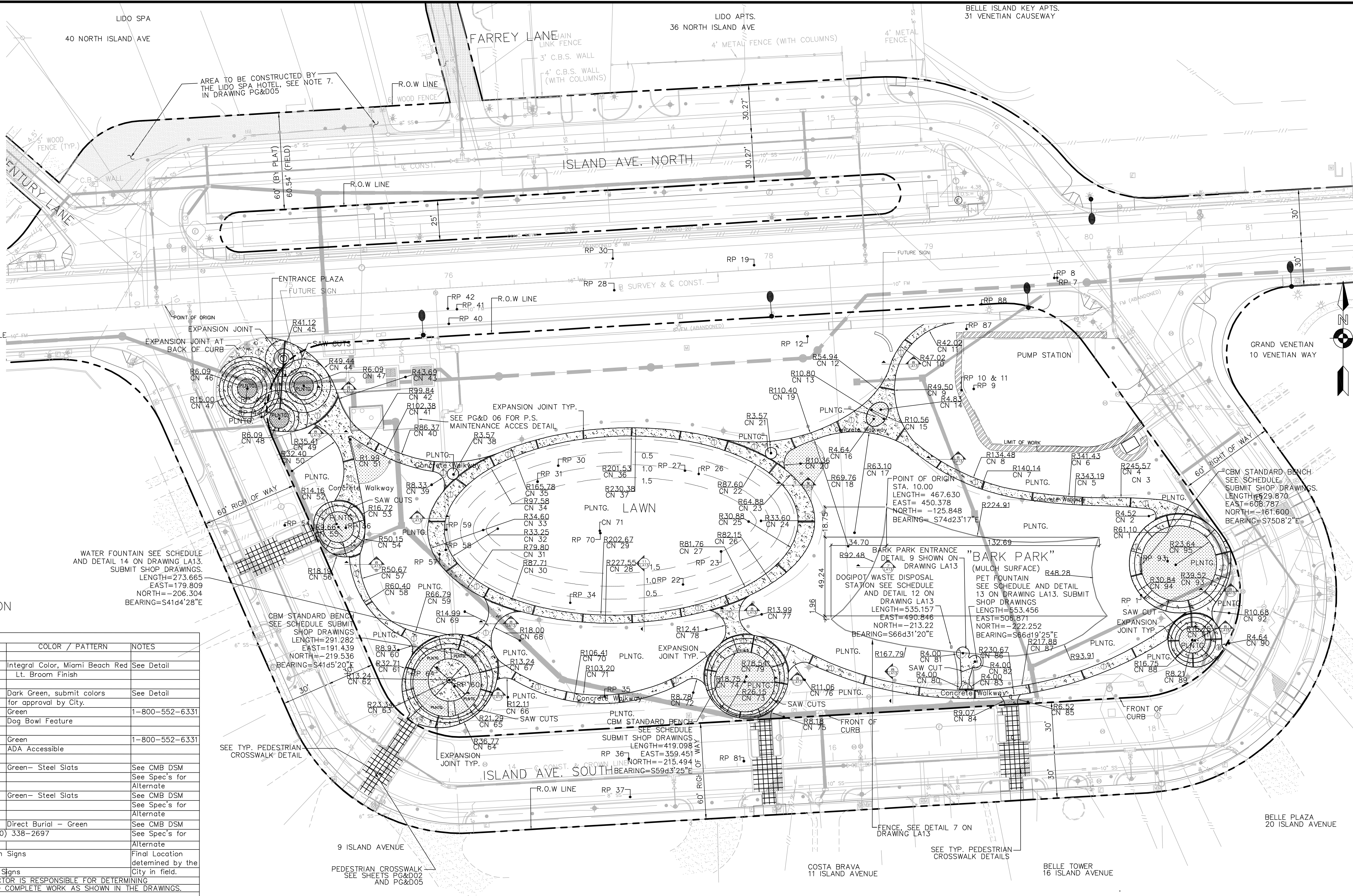
- LEGEND**
- EXISTING SIDE WALK AND DRIVEWAY
 - PROPOSED CONCRETE SIDEWALK
 - PROPOSED GROUNDCOVER SEE DRAWING & PLANT LIST IN SHEET LA11
 - PROPOSED SHRUB SEE DRAWING & PLANT LIST IN SHEET LA11
 - PROPOSED FLOWER BEDS. SEE DRAWING & PLANT LIST IN SHEET LA11

- CMB STANDARD BENCH. SEE SCHEDULE ON DRAWING LA03
- DOGIPOT WASTE DISPOSAL STATION SEE SCHEDULE AND DETAIL 12 ON DRAWING LA13
- PET FOUNTAIN SEE SCHEDULE AND DETAIL 13 ON DRAWING 13. SUBMIT SHOP DRAWINGS
- WATER FOUNTAIN SEE SCHEDULE AND DETAIL 14 ON DRAWING LA13. SUBMIT SHOP DRAWINGS
- RP 19 RADIUS POINT (CENTER OF CURVE)
- R110.40 CN 19 RADIUS CURVE NUMBER (RP)

NOTE:
FOR CURVE RADIUS INFORMATION
SEE SHEET LA04.

KEY	QTY	DESCRIPTION	COLOR / PATTERN	NOTES
1	20,000	4" Th. Concrete w/ 6x6 no. 10 WWF	Integral Color, Miami Beach Red Lt. Broom Finish	See Detail
	495 LF	Aluminum Picket Fencing, 3" Spacing	Dark Green, submit colors for approval by City.	See Detail
	1	Most Dependable Fountain-400-SM w/ Pet Fountain, Template 1010 mount	Green Dog Bowl Feature	1-800-552-6331
	1	Most Dependable Fountain- 410- SM Template 10 mount	Green ADA Accessible	1-800-552-6331
	8	CMB Standard Bench	Green- Steel Slats	See CMB DSM See Spec's for Alternate
	4	CMB Standard Waste Receptacle Per City Requirements	Green- Steel Slats	See CMB DSM See Spec's for Alternate
	1	Dogipot Dispenser Disposal Waste Container- Model DOG1001 (800) 338-2697	Direct Burial - Green	See CMB DSM See Spec's for Alternate
	2	City of Miami Beach - Park Information Signs		Final Location determined by the City in field.
	2	City of Miami Beach - Park Ordinance Signs		Final Location determined by the City in field.

NOTE: QUANTITIES INCLUDE 5% OVERAGE. CONTRACTOR IS RESPONSIBLE FOR DETERMINING EXACT QUANTITIES OF MATERIALS INDICATED TO COMPLETE WORK AS SHOWN IN THE DRAWINGS. SUBMIT SHOP DRAWINGS FOR APPROVAL.



NO.	DATE	REVISION	APP'D. BY
5			
4			
3			
2	01/11/06	AS-BID DOCUMENTS	
1	11/18/05	100% SUBMITTAL COMPLETION STAGE	

DESIGNER: B.M.
DRAWN BY: O.S.
CHECKER: B.M.
SCALE: 1"=30'-0"

Edwards and Kelcey
7300 N. Kendall Drive
Suite 400
Miami, Florida 33156
Tel: 305.279.2298
Fax: 305.279.5812
E: edk@edk.com

savinmiller
DESIGN STUDIO
LANDSCAPE ARCHITECTURE & PLANNING
1700 CONVENTION CENTER DRIVE, MIAMI BEACH, FL 33139
Tel: 305.279.2298
Fax: 305.279.5812
E: savinmiller@edk.com

CITY OF MIAMI BEACH, FLORIDA
CAPITAL IMPROVEMENT PROJECTS OFFICE
BARRY R. MILLER, L.A.
No. 866

CITY OF MIAMI BEACH, FLORIDA
CAPITAL IMPROVEMENT PROJECTS OFFICE
1700 CONVENTION CENTER DRIVE, MIAMI BEACH, FL 33139

VENETIAN ISLANDS BID PACKAGE B
BELLE ISLE R/W AND PARK IMPROVEMENTS
HARDSCAPE PLAN- PARK

File location:
D:\Acad\Projects\Venetian Islands-Belle Isle\Package-B_Const_Docs
Date: 01-11-06
Sheet: 63 of 73 Drawing: LA03